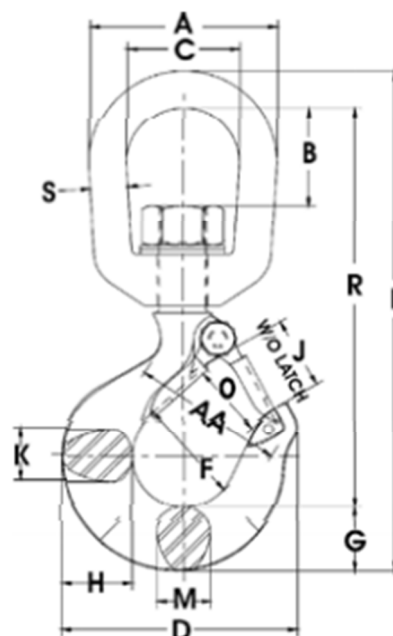




## Crosby hák otočný

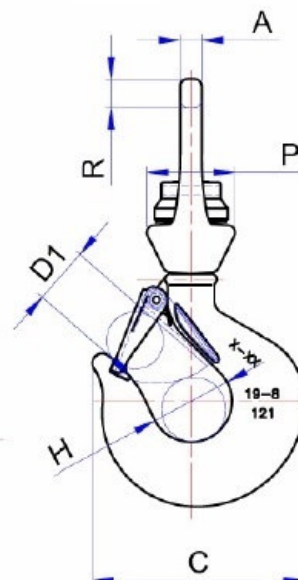
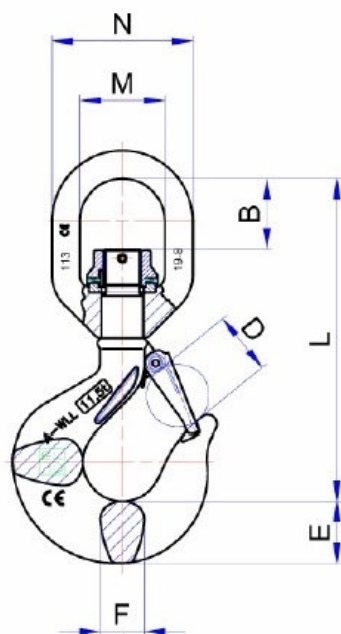


Working Load Limit (t)*		S-322 CN Stock No.	S-322 AN Stock No.	Weight Each (lbs.)	Dimensions (mm)															Rep. Latch Stock No.
Carbon	Alloy				A	B	C	D	F	G	H	J	K	L	M	O †	R	S	AA	
.75	1.25	1048600	1048804	.34	51.0	20.8	31.8	72.5	31.8	18.5	20.6	23.6	16.0	144	16.0	23.6	116	9.65	38.1	1096325
1	1.60	1048609	1048813	.57	63.5	33.3	38.1	80.0	35.1	21.3	23.9	24.6	18.0	170	18.0	24.6	136	12.7	50.8	1096374
1.6	2.50	1048618	1048822	1.02	76.0	38.1	44.5	91.0	38.1	25.4	29.5	26.9	22.4	197	22.4	26.9	155	16.0	50.8	1096421
2	3.20	1048627	1048831	1.04	76.0	38.1	44.5	102	41.1	28.7	33.3	30.2	23.9	210	23.9	29.5	165	16.0	50.8	1096468
3.2	5.4	1048636	1048837	2.25	89.0	41.7	50.8	123	51.0	36.6	41.4	38.1	33.3	246	28.7	35.8	191	19.1	63.5	1096515
5	8.0	1048645	1048854	4.67	116	58.0	63.5	160	63.5	46.0	52.5	45.2	42.2	317	36.6	42.9	245	25.4	76.2	1096562
7.5	11.5	1048654	1048865	8.80	127	64.5	70.0	192	76.0	57.0	67.0	51.0	47.8	375	41.4	56.5	289	28.7	101	1096609
10	16	1048663	1048877	10.5	143	63.0	79.0	212	82.5	66.0	74.5	66.5	55.5	417	49.3	61.0	311	31.8	101	1096657
15	22	1048672	1048886	21.3	180	95.5	104	263	108	76.0	89.0	86.5	68.5	542	60.5	81.0	424	38.1	127	1096704
-	31.5	-	1025688	32.0	180	95.5	104	346	127	93.0	118	102	72.5	590	76.2	82.6	459	38.1	165	1093716





## Otočný hák s ložiskem



Typ	Řetěz (mm)	Nosnost (t)	Hmotnost (kg)	A (mm)	B (mm)	C (mm)	D (mm)	D1 (mm)	E (mm)	F (mm)	H (mm)	L (mm)	M (mm)	N (mm)	P (mm)	R (mm)
WHS-EL 6	6	1,25	0,75	10	34	77	24	20	21	15	31	133	38	63	39	12,5
WHS-EL 7	7	1,6	1,00	10	33	82	26	22	23	18	34	140	38	63	39	12,5
WHS-EL 8	8	2,5	1,40	12,5	42	94	27	23	27	23	38	163	47	79	48	16
WHS-EL 10	10	3,2	1,66	12,5	40	106	32	27	31	23	42	172	47	79	48	16
WHS-EL 13	13	5,4	3,65	15	50	132	40	35	37	29	50	213	58	98	60	19
WHS-EL 16	16	8	5,87	17,5	65	165	51	43	49	37	62	266	72	120	70	24
WHS-EL 19	19	11,5	9,75	22	68	198	58	53	60	43	75	310	82	136	82	27
WHS-EL 22	22	16	15,3	24	84	222	66	58	67	52	84	352	92	154	92	31
WHS-EL 26	26	22	26,50	29	107	283	87	78	80	64	110	434	115	191	108	38
WHS-EL 32	32	31,5	50	34	117	339	97	87	94	80	120	512	132	222	132	45

